

b3o enviroTek Presents

Upgrade Your Leak Detection Program With The HL5000 Digital Leak Detector from **METROTECH**

Modern "DSA" * technology, combined with a 16 bit DSP (digital signal processor) provides the user with the highest audio quality available in the industry. The HL5000 is the professional leak detector other manufacturers wish they had made.



Background noise is simultaneously minimized. This means that leaks which only produce a quiet sound can also be reliably identified.

The HL5000 is easy to carry even for longer periods of work due to the small housing and low weight. The large back-lit display provides easy reading of the measurement results.

The HL5000 is simple to use which makes it an essential companion in your daily search for leaks.

Minimum Measurement Mode

Helps to isolate the leak noise, and a Memory Mode, which allows storage of up to nine comparative noise values to

help eliminate the guesswork of listening to leak noises. All units have selective frequency filtering, which allows for the rejection of unwanted noise.

Classic listening function...

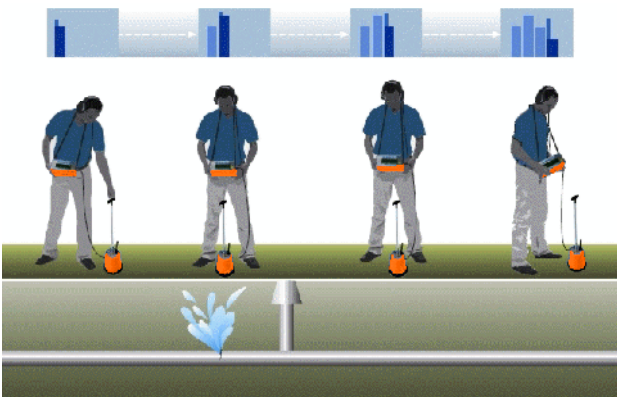
Allows the desired leak noise to be isolated, even under the most extreme conditions.

Frequency Analysis...

Allows the user to selectively filter any unwanted frequency highlighting the audio signature of the actual leak. Durable, waterproof user-friendly membrane switch controls.

Memory Mode....

Allows storage of up to nine noise values and minimum noise values simultaneously via Metrotech's unique "DSA" (*Dual Segment Analysis). This provides a comparison between a number of sequentially recorded measurement values. The following picture shows the leak process provided by this amazing instrument.



Memory Mode- See and hear leaks. Forget about reading numbers. With histogram measurements you can both hear and see the leak. Up to nine measurements are saved and displayed as a DSA sequence in this function. The narrow segment shows the level of background noise, the wide segment shows the sound of the leak. The leak is located where the wide segment is highest.



Visit Our Storefront For Special Pricing and Trade-In Programs

www.LocateUnderground.com